



# Ethernet Products Quick Start Guide



NOTE: This document is available for download at [www.broadcasttools.com/downloads/](http://www.broadcasttools.com/downloads/)

Updated 01/20/2016

*Broadcast Tools® is a registered trademark of Broadcast Tools, Inc.  
All Sentinel® products are a registered trademark of Broadcast Tools, Inc.  
Copyright © 1989 - 2016 by Broadcast Tools, Inc. All rights reserved.  
No part of this document may be reproduced or distributed without permission.*

Visit [www.broadcasttools.com](http://www.broadcasttools.com) for important product update information.

---

## Web Setup/Operation

NOTE: We recommend the use of the latest version of Firefox, Safari for Windows or Chrome as your browser.

### Ethernet "Quick Start" guide

CAUTION! If you are not familiar with Ethernet enabled equipment, it may be useful to contact your IT department, network administrator or network consultant for help. Assigning an IP address already in use by another device may cause problems with your network! Instructions for changing the IP address of the computer that will be used for the configuration of this product are given here. Note that these instructions are specifically for computers with the Windows XP operating system. For setup using other operating systems, refer to the appropriate OS user's manual.

### WEBSITE:

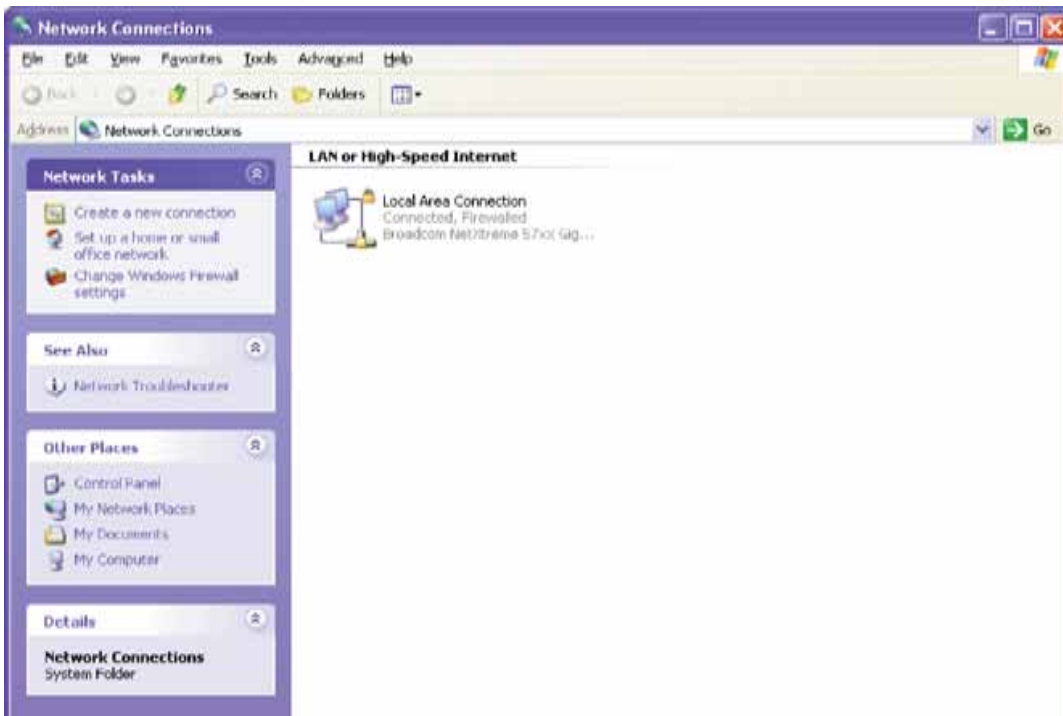
Visit our web site for product updates and additional information.



SETUP GUIDE



**Step 2:** Double click on the icon labeled Network Connections. The following menu will pop up.



**Step 3:** Right click on the icon labeled Local Area Connection. Another menu will appear. Select the option at the bottom of the menu labeled Properties. The Local Area Connection Properties window will appear.

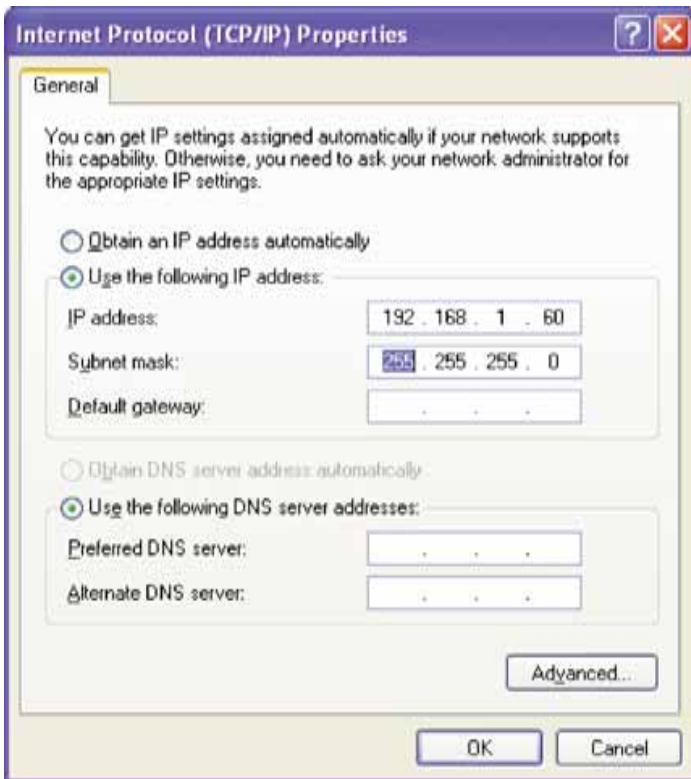


## WEBSITE:

Visit our web site for product updates and additional information.



**Step 4:** On the Local Area Connection Properties page, double click on Internet Protocol (TCP/IP) to display properties.



**Step 5:** Before making any changes to the network settings, write down the current settings (or screen capture the page and print) so that they can be restored once the unit is configured. Next, select the radio button labeled “Use the following IP address” and type in the IP address 192.168.1.60. Type in the subnet mask of 255.255.255.0. Leave the default gateway field blank. Click OK to apply the new settings.

For Technical Support contact:

**Broadcast Tools, Inc.**  
support@broadcasttools.com  
360-854-9559  
www.broadcasttools.com