

## Entering Configuration Mode via the WVRC-4/8 Serial Port:

To configure the unit through a serial connection:

1. Remove power and turn **ON** DIPswitch 5 (down).
2. Connect a PC running the HyperTerminal program to your unit's serial port. The default serial port settings are **9600 baud, 8 bits, no parity, 1-stop bit, no-flow control**.
3. *Hold down the x key on the PC while re-powering the unit.*
4. *When you receive the prompt on the PC screen, remove your finger from the X key and immediately press the enter key to obtain the menu.*
5. *Go through the menu below and select the desired item number.*

**0 - Set desired IP and gateway.**

**1 - Set 1st entry to 09600, 2nd entry to 4C and the last entry to 00.**

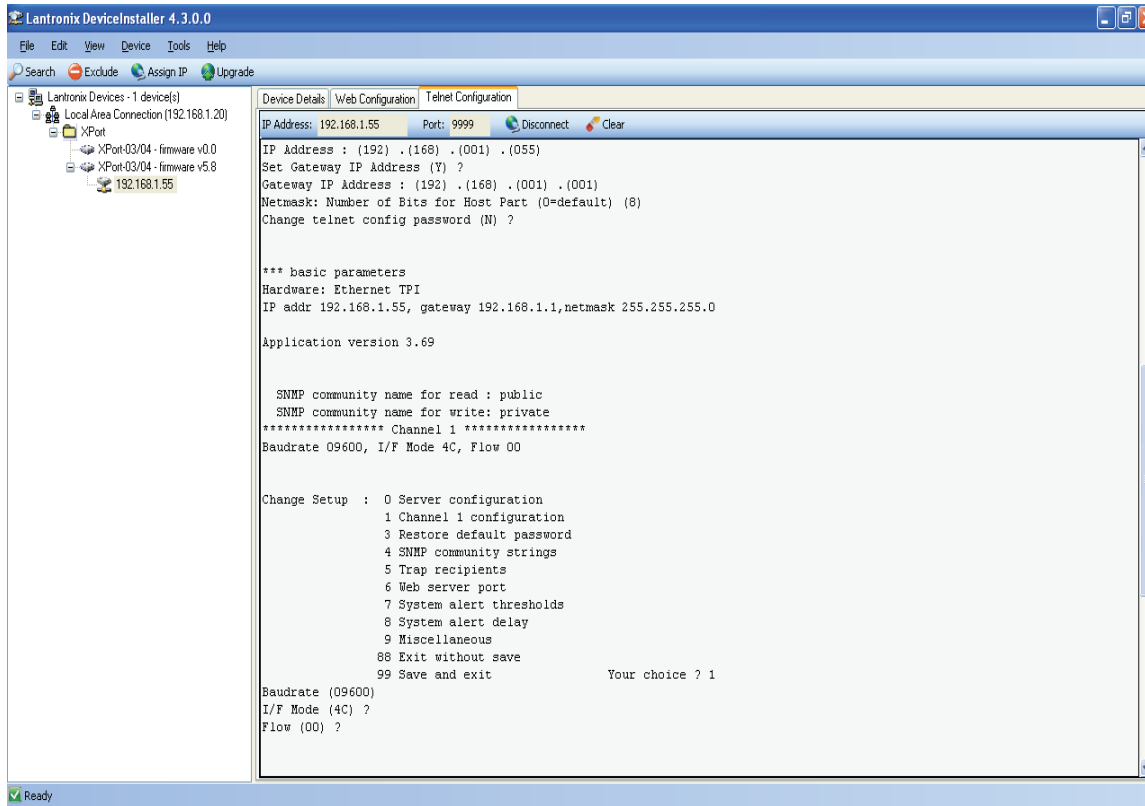
**3 - Resets username and password to default.**

**6 - Set to 80.**

**7 - Set to 9.**

**8 - Set to 9.**

**9 - Set the 1<sup>st</sup> entry to 3001 and the 2<sup>nd</sup> entry to 10001.**



## Exiting the WVRC-4/8 Configuration Mode:

1. To save all changes and reboot the device, select option **99 Save and exit** from the Change Setup menu. All values are stored in nonvolatile memory.
2. To exit the configuration mode without saving any changes or rebooting. Select option **88 Exit without save** from the Change Setup menu.
3. Remove power and turn DIP switch 5 **OFF** (up).
4. Re-apply power to the unit.