



Installation and Operation Manual



Status Sentinel

Manual Update: 04/15/2009

Due to the dynamic nature of product design, the information contained in this document is subject to change without notice. Broadcast Tools, Inc., assumes no responsibility for errors and/or omissions contained in this document. Revisions of this information or new editions may be issued to incorporate such changes.

Broadcast Tools® is a registered trademark of Broadcast Tools, Inc.

tiny TOOLS™ is a trademark of Broadcast Tools, Inc.

All Sentinel™ labeled products are a trademark of Broadcast Tools, Inc.

Copyright © 1989 - 2009 by Broadcast Tools, Inc. All rights reserved.

No part of this document may be reproduced or distributed without permission.

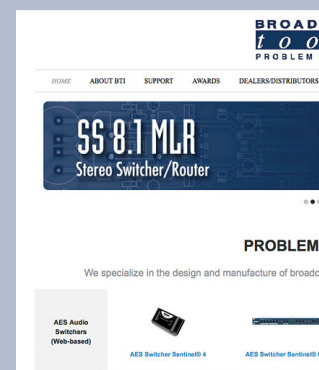
Visit www.broadcasttools.com for important product update information.

Table of Contents

| Section Title | Page # |
|--|--------|
| Introduction | 3 |
| Safety Information | 3 |
| Who to Contact for Help | 3 |
| Product Overview | 4 |
| Inspection | 4 |
| Installation | 4 |
| Surge Protection | 4 |
| UPS Standby Power System | 4 |
| “NET” Network connector | 4 |
| POWER connector | 4 |
| Status/Digital input connection..... | 5 |
| Power and Status LED’s | 5 |
| On-board 5VDC power source | 5 |
| Chassis ground | 5 |
| Web Setup/Operation | 5 |
| Ethernet “Quick Start” guide | 5 |
| Opening the LOGIN Web Page | 8 |
| “Login” Web Page | 9 |
| “Monitor/Control” Web Page | 10 |
| “User Setup” Web Page | 11 |
| “Status Setup” Web Page | 12 |
| “Email/Network Setup” Web Page | 13 |
| Restoring Network Factory Defaults | 13 |
| “Show Log” Web Page | 15 |
| “About” Web Page | 16 |
| Specifications | 17 |
| Warranty | 18 |
| Declaration of Conformity | 19 |

WEBSITE:

Visit our web site for product updates and additional information.



CONTENTS

INTRODUCTION

Thank you for your purchase of a Broadcast Tools® Status Sentinel™ Web enabled three-input status/digital module (referred to as the Status Sentinel™ throughout this manual). We're confident that this product will give you many years of dependable service. This manual is intended to give you all the information needed to install and operate the Broadcast Tools® Status Sentinel™.

SAFETY INFORMATION

Only qualified personnel should install Broadcast Tools® products. Incorrect or inappropriate use and/or installation could result in a hazardous condition.

Broadcast Tools, Inc., is unable to support NON-Broadcast Tools software, hardware or NON-Broadcast Tools computer/hardware/software problems. If you experience these problems, please research your hardware/software instruction manuals or contact the manufacturers technical support department.

WHO TO CONTACT FOR HELP

If you have any questions regarding your product or you need assistance, please contact your distributor from whom you purchased this equipment.

If you would like more information about Broadcast Tools® products, you may reach us at:

Broadcast Tools, Inc.

131 State Street

Sedro-Woolley, WA 98284-1540 USA

Voice: 360.854.9559

Fax: 866.783.1742

Internet Home Page: www.broadcasttools.com

E-mail: support@broadcasttools.com

**THANK YOU FOR CHOOSING
BROADCAST TOOLS® BRAND PRODUCTS!**

Broadcast Tools is a Veteran Owned Business



Designed, Assembled and Supported in WA State, USA



CAUTION!

Broadcast Tools® Products, as with any electronic device, can fail without warning. Do not use this product in applications where a life threatening condition could result due to failure.

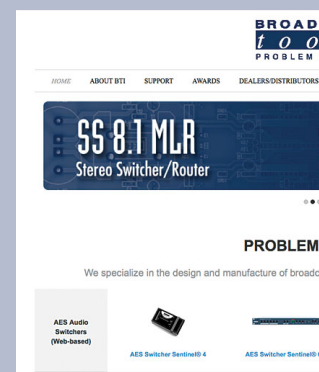


NOTE:

This manual should be read thoroughly before installation and operation.

WEBSITE:

Visit our web site for product updates and additional information.



INTRODUCTION

Product Overview

The Status Sentinel™ is a robust, full-featured; Ethernet based data acquisition device with three optically isolated status (digital) inputs. The Status Sentinel™ can be controlled and/or monitored over any IP network including private networks, IP-based industrial control networks, and the Internet. Users can operate the product using a web browser or web-enabled mobile device, while email notification may be configured to alert up to four recipients when alarms are detected. The user may also enable a sound effect to play when an alarm is generated. Logging of input status, along with the site ID text may be emailed from once an hour to once a day.

The Status Sentinel™ may be paired with the Relay Sentinel™ to form a “Relay Extension Cord”.

Inspection

Please examine your Status Sentinel™ carefully for any damage that may have been sustained during shipping. If any damage is noted, please notify the shipper immediately and retain the packaging for inspection by the shipper. The package should contain the Status Sentinel™, this manual and/or CD, 7 foot BLUE straight-through CAT 5 cable, 7 foot GRAY crossover CAT 5 cable, and the 7.5 VDC @ 500ma wall transformer.

Installation

Surge Protection

The Status Sentinel™ has built-in resistance to voltage changes; we recommend that you use a power surge protector or line conditioner on the incoming AC line. Lightning strikes and/or other high voltage surges may damage your Status Sentinel™ and connected equipment if it is not properly protected. For lightning protection devices, check out www.polyphaser.com and www.itwlinx.com.

UPS Standby Power System

We recommend that you connect your Status Sentinel™ to a UPS system. A UPS helps minimize the risk to the Status Sentinel™ and provides power during a power outage.

“NET” network RJ45 connector

Connect one end of the supplied CAT5 (straight or crossover) cable to the desired ETHERNET (WAN/LAN) or PC port.

POWER 7.5 VDC connector

This is the connector used to power the unit. Never use any type of power supply other than the specified power supply.



CAUTION!

Installation of the Relay Sentinel™ in high RF environments should be performed with care. The station ground should be connected to the designated chassis ground terminal or chassis ground screw using a 20 to 24-gauge wire.

Installation

Status/Digital (OPTO +/-) 1,2,3 input connections

The optically isolated status/digital inputs accept (WET) voltages from 5 to 24 volts DC. Higher voltages may be applied if an appropriate value external current limiting resistor is used. Connect the positive voltage to the desired “OPTO +” terminal (anode) and ground or minus voltage to the desired “OPTO –” terminal (cathode).

NOTE: Please observe proper polarity.

Connecting (DRY) contact closures to the status/digital input requires the user to connect the 5VDC terminal to the desired OPTO + terminal. Connect one side of the external contact closure to the GND terminal and the other side of the external contact closure to the desired OPTO – terminal.

NOTE: Please observe proper polarity. The on-board 5VDC power source may be used to power the (DRY) inputs.

Power LED

Indicates power is applied.

OPTO-Input 1,2,3 LED's

Illuminates when the appropriate status/digital input is activated.

On-board 5VDC power source

The on-board five-volt DC power source may be used to power the status/digital input and/or external equipment. The supply is current limited to 100ma. Connections should be made to the “5VDC” and “GND” terminals.

CHS GND connector

Connect the station ground to this terminal.

Web Setup/Operation

Ethernet “Quick Start” guide

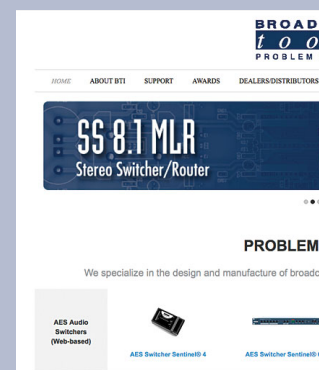
CAUTION! If you are not familiar with Ethernet enabled equipment, it may be useful to contact your IT department, network administrator or network consultant for help. Assigning an IP address already in use by another device may cause problems with your network! Instructions for changing the IP address of the computer that will be used for the configuration of this product are given here. Note that these instructions are specifically for computers with the Windows XP operating system. For setup using other operating systems, refer to the appropriate OS users manual.



NEVER DOWNLOAD FIRMWARE UPDATES OR CHANGES TO THE XPORT WEB-SERVER UNLESS INSTRUCTED TO DO SO BY BROADCAST TOOLS®. DOING SO DELETES ALL SOFTWARE AND VOIDS ALL WARRANTIES FROM BROADCAST TOOLS, INC.

WEBSITE:

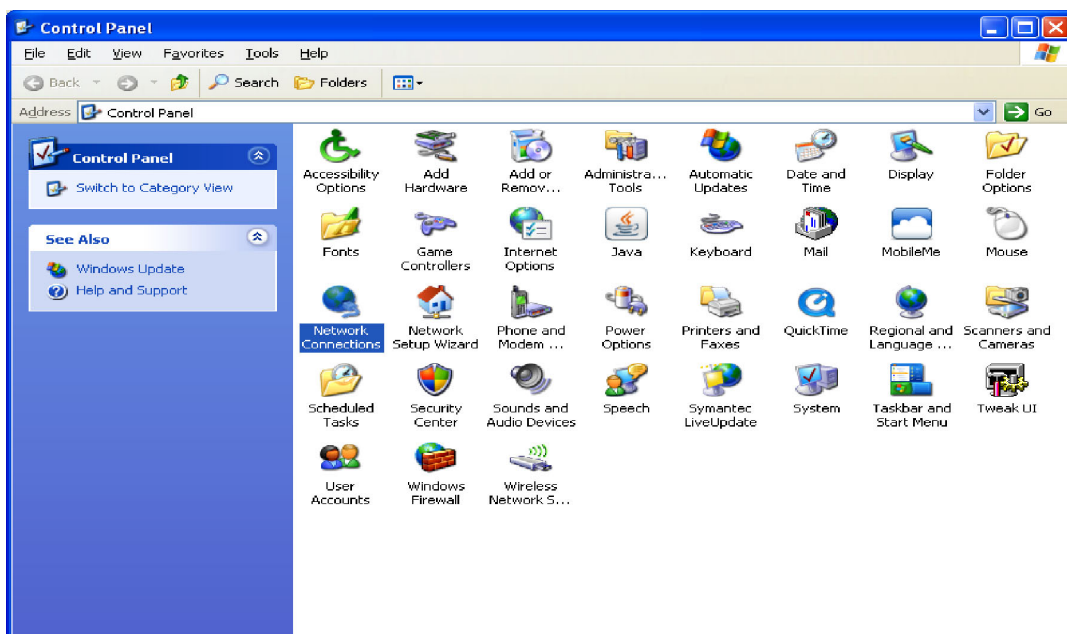
Visit our web site for product updates and additional information.



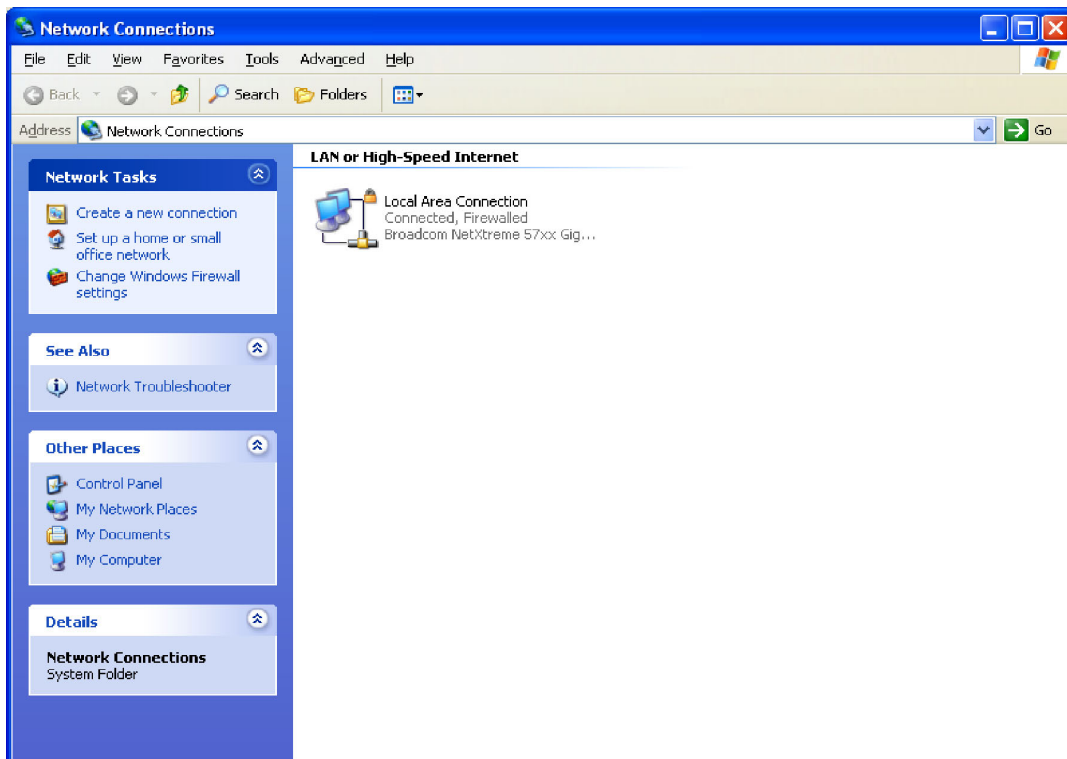
INSTALLATION

Web Setup/Operation

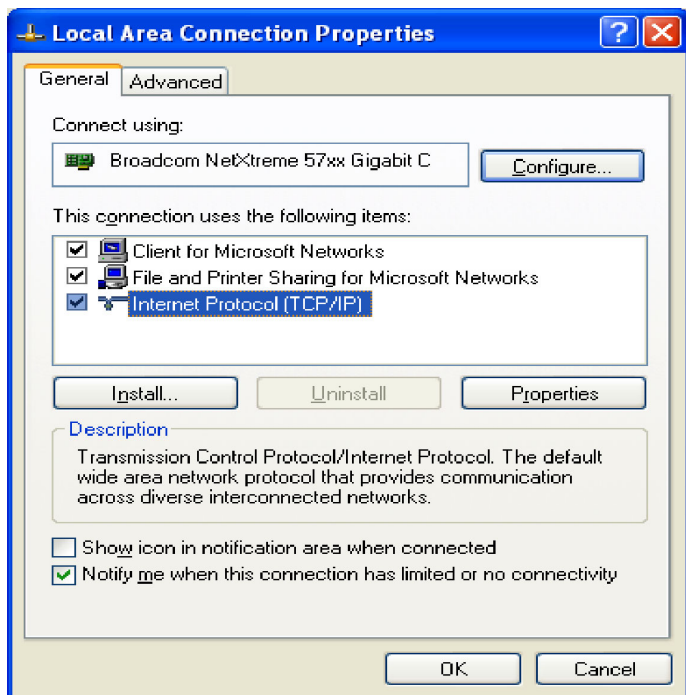
Step 1: Open the control panel by clicking on the start menu, click on settings, then click on Control Panel. (Note that the control panel shown is in “Classic View”. If control panel is in “Category View” select the “Classic View” option before proceeding.)



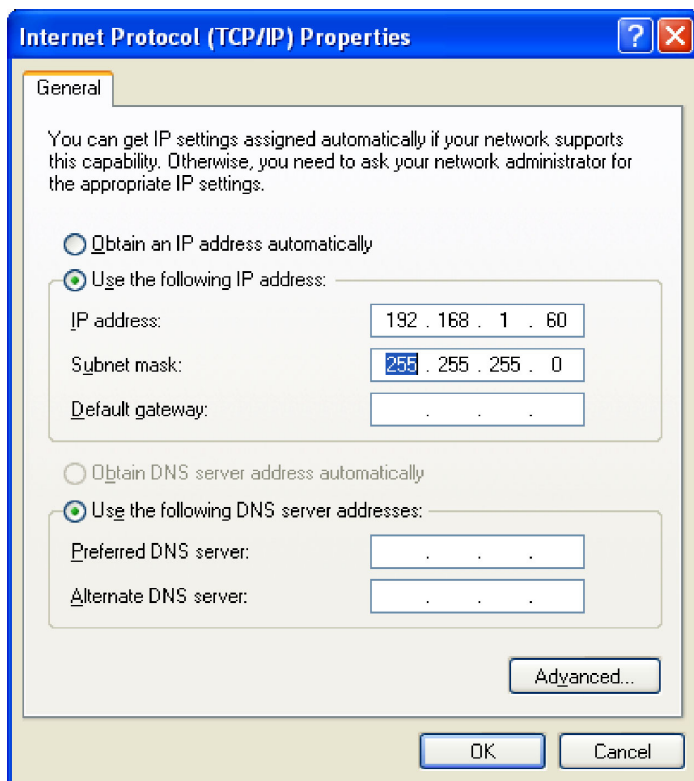
Step 2: Double click on the icon labeled Network Connections. The following menu will pop up.



Step 3: Right click on the icon labeled Local Area Connection. Another menu will appear. Select the option at the bottom of the menu labeled Properties. The Local Area Connection Properties window will appear.

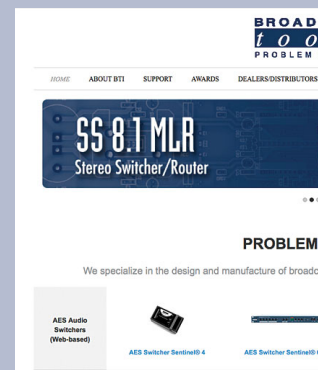


Step 4: On the Local Area Connection Properties page, double click on Internet Protocol (TCP/IP) to display properties.



WEBSITE:

Visit our web site for product updates and additional information.



Step 5: Before making any changes to the network settings, write down the current settings (or screen capture the page and print) so that they can be restored once the unit is configured. Next, select the radio button labeled “Use the following IP address” and type in the IP address 192.168.1.60. Type in the subnet mask of 255.255.255.0. Leave the default gateway field blank. Click OK to apply the new settings.

Opening the LOGIN Web Page

1. Connect the supplied GRAY colored XOVER cable between the PC’s Ethernet port and the products NETWORK RJ45’s jack.
2. Connect the supplied 7.5 VDC power supply to the product’s power jack labeled Power 7.5 VDC. Verify that the green POWER LED and left “LINK” LED above the “NET” Network RJ-45 are illuminated

Ethernet (NETWORK) port LED indicator functions

| Link LED Left Side | |
|-----------------------|----------|
| Color | Meaning |
| Off | No Link |
| Amber | 10 Mbps |
| Green | 100 Mbps |

| Activity LED Right Side | |
|----------------------------|-------------|
| Color | Meaning |
| Off | No Activity |
| Amber | Half Duplex |
| Green | Full Duplex |

3. Open the product’s login page by typing the following URL into the browser: <http://192.168.1.55> A username and password is required to change any parameter and are case sensitive.

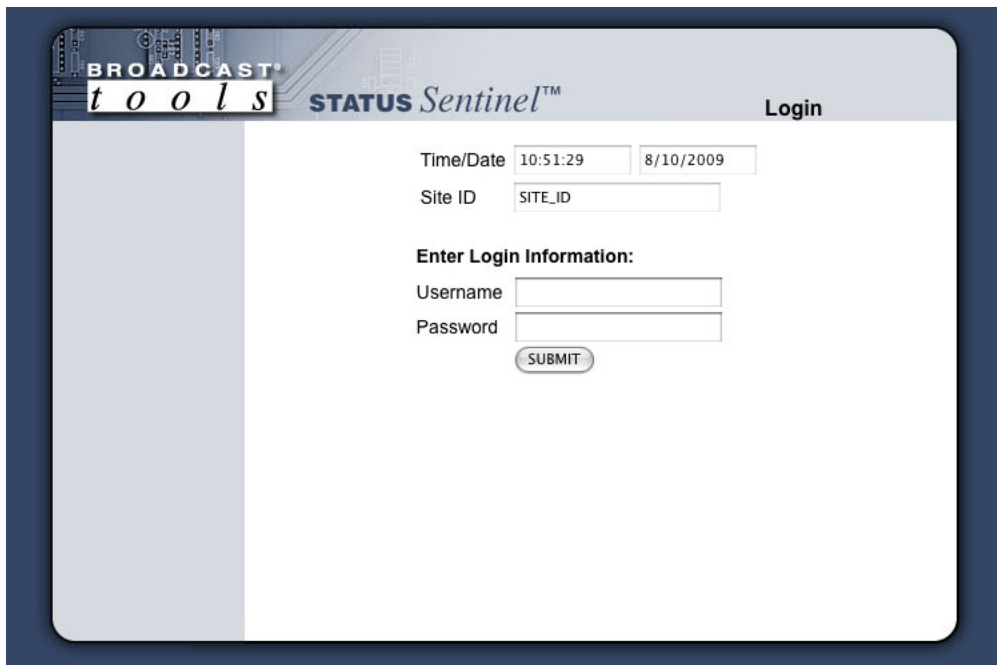
Factory “Login” defaults:

username: admin (lower case)
password: 1234

4. Once you are logged in, follow this manual for setup and/or operational information.

“Login” Web Page

The Login screen displays the username and password entry points.

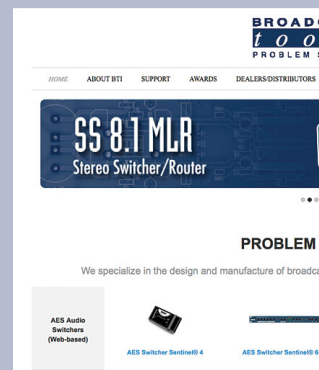


The screenshot shows the login interface for the Broadcast Tools Status Sentinel. At the top left is the 'BROADCAST tools' logo, and next to it is the 'STATUS Sentinel™' text. On the top right is a 'Login' button. Below the header, there are two input fields for 'Time/Date' with values '10:51:29' and '8/10/2009'. Below that is a 'Site ID' field with the placeholder 'SITE_ID'. A section titled 'Enter Login Information:' contains a 'Username' field and a 'Password' field. At the bottom of this section is a 'SUBMIT' button.

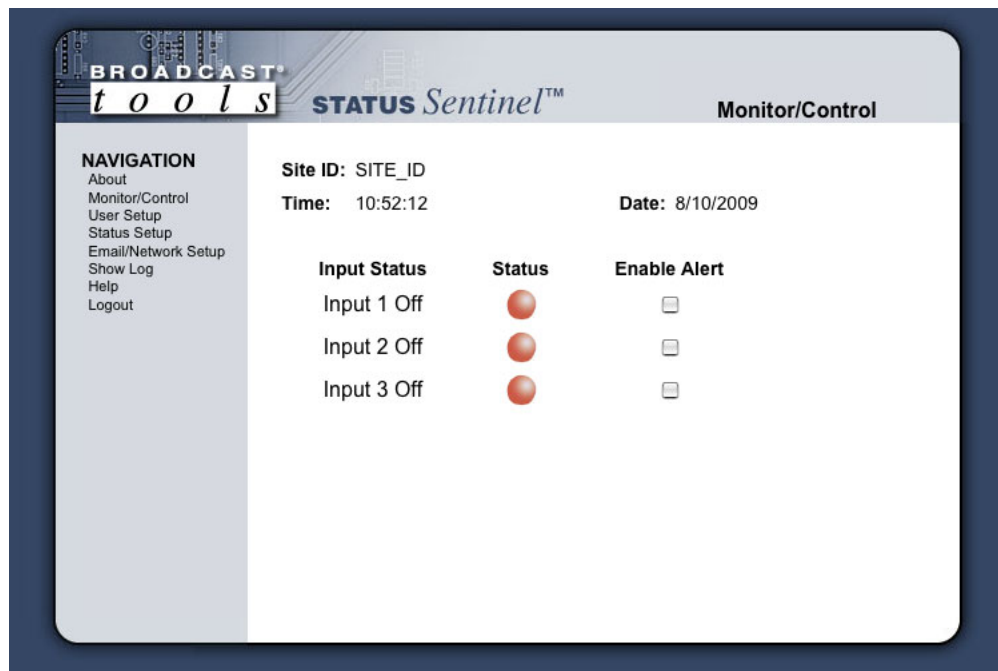
After you have successfully logged in, the Monitor/Control page will be displayed. Depending on your access level, you may or may not be able to control or modify the product's configuration.

WEBSITE:

Visit our web site for product updates and additional information.



“Monitor/Control” Web Page



The Monitor/Control page allows the monitoring of each status/digital input via each status LED. The alert function may also be enabled on this page.

Input Status: Used to identify the status/digital input.

Status ON: This indicator will display GREEN when ON.

Status OFF: This indicator will display RED when OFF.

Enable Alerts: Must be checked to enable each Status/digital alert.

The user defined Site ID, Time and Date is also displayed.

To select other pages (if authorized), make your selection under the left hand Navigation column.

“User Setup” Web Page

| Username | Password | --- Access Level --- | | |
|----------|----------|----------------------------------|-----------------------|-----------------------|
| | | Admin | Monitor Control | Monitor Only |
| admin | 1234 | <input checked="" type="radio"/> | <input type="radio"/> | <input type="radio"/> |
| | | <input type="radio"/> | <input type="radio"/> | <input type="radio"/> |
| | | <input type="radio"/> | <input type="radio"/> | <input type="radio"/> |
| | | <input type="radio"/> | <input type="radio"/> | <input type="radio"/> |
| | | <input type="radio"/> | <input type="radio"/> | <input type="radio"/> |
| | | <input type="radio"/> | <input type="radio"/> | <input type="radio"/> |
| | | <input type="radio"/> | <input type="radio"/> | <input type="radio"/> |
| | | <input type="radio"/> | <input type="radio"/> | <input type="radio"/> |

Save Settings

This page can only be configured with (factory default) the “admin” access level.

The site ID may be used to display up to 29 numbers and/or characters labels.

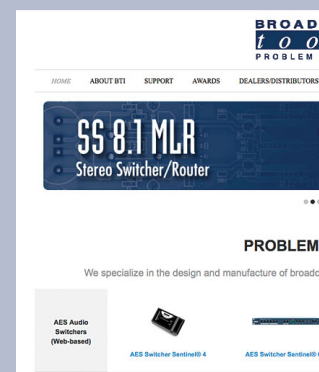
Eight Usernames and Passwords may be configured for up to three access levels.

1. “admin” allows complete product configuration access.
2. “Monitor/Control” allows the following access:
About, Monitor/Control, Show log, Help, and Logout.
3. “Monitor Only” allows the following access:
About, Monitor only, Help, and Logout.

NOTE: After any item has been changed, you **MUST** press the “Save Settings” button for your changes to be saved.

WEBSITE:

Visit our web site for product updates and additional information.



“Status Setup” Web Page

- Input selection drop-down:** Allows for the selection of each input.
- Input Status Message:** Used to identify each input.
- OFF Alert:** This box must be checked to enable alarms when the input is OFF. The box labeled 1,2,3,4 allows the user to enable up to four different email addresses.
- ON Alert:** This box must be checked to enable alarms when the input is ON. The box labeled 1,2,3,4 allows the user to enable up to four different email addresses.
- Delay:** The delay is in seconds. This option specifies the wait time from when a status/digital input changes state before an alarm is activated.
NOTE: Set to zero when paired with the Relay Sentinel™.
- Normal Signal Level:** This drop-down allows the selection of current logic level. This normally set for High, but may be set to low.
NOTE: When the "Normal signal level" is set to High = When NO voltage is applied to the input, it's considered OFF, when voltage IS applied to the input, it's considered ON.
NOTE: When the "Normal signal level" is set to Low = When voltage IS applied to the input, it's considered OFF. When NO voltage is applied to the input, it's considered ON.
- Relay:** Normally disabled. When paired with the Relay Sentinel™ to form a “Relay Extension Cord”. This drop-down should be set to enable.
NOTE: You will also need to enter the IP address of the Relay Sentinel™ and port.

NOTE: By enabling the ON and/or OFF monitoring and NOT enabling an email box, the device will log the events, but not send an email. If the device is exiting a OFF alarm condition, then the email addresses used will be those notified when the OFF alarm condition was entered.

Page Refresh Time: This option specifies how often the web page is automatically refreshed in seconds.

NOTE: After any item has been changed, you **MUST** press the “Save Settings” button for your changes to be saved.

“Email/Network Setup” Web Page

BROADCAST tools STATUS Sentinel™ Email / Network Setup

NAVIGATION

- About
- Monitor/Control
- User Setup
- Status Setup
- Email/Network Setup
- Show Log
- Help
- Logout

HTTP Server Address: 192 . 168 . 1 . 55
HTTP Server Netmask: 255 . 255 . 255 . 0
HTTP Server Gateway: 192 . 168 . 1 . 1
HTTP Port: 80
Site ID: SITE_ID
SMTP Server Address:
SMTP Port: 25
SMTP Return Address:
SMTP Host ID:
SMTP Authentication: ☐
SMTP Username:
SMTP Password:
Logging Email Address:
Update Interval (Hours): 0
Recipient Addresses: 1, 2, 3, 4
SNMP Manager IP Address: 192 . 168 . 1 . 170
SNMP Manager Trap Port: 162
SNMP Read Community: public
SNMP Write Community: private
SNMP Enable Traps: ☐
Relay Sentinel IP Address: 0 . 0 . 0 . 0
Relay Sentinel Port: 0
Backup DNS Server IP Address: 192 . 168 . 1 . 1
NTP Server Address: pool.ntp.org
NTP Port: 123
NTP Update Interval (Minutes): 30
NTP Enabled: ☒
Time Zone Offset from UTC: -8.0 hours
Save Settings Send Test E-mail Reload Defaults

Restoring Network Factory Defaults

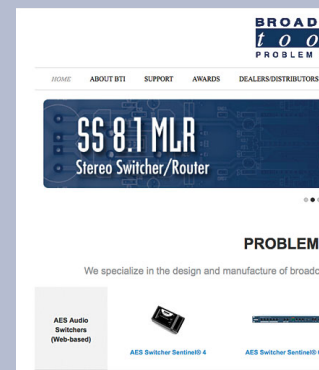
The Status Sentinel™ factory defaults may be restored by shorting pins 3 & 4 on the module RJ11 jack while powering up the product. Remove the short after 3 seconds.

HTTP Server Address: Enter a static IP address here. Default: 192.168.1.55

HTTP Server Net mask: Enter the Net mask here: Default: 255.255.255.0

WEBSITE:

Visit our web site for product updates and additional information.



SETUP

HTTP Server Gateway: Enter the Gateway IP here: **Default: 192.168.1.1**

HTTP Port: Normally Port 80 **Default: 80**

Site ID: Enter text to identify the site, location, etc.

SMTP Server Address: The user can enter either an IP address in the xxx.xxx.xxx.xxx format or a URI in the form: smtp.com-cast.net. In order to resolve the URI, a working DNS server must be present or it's IP address entered into the system.

SMTP Port: Normally Port 25 **Default: 25**

Return Address: Enter your return email here.

NOTE: The user must enter the following items before an email can be successfully sent: SMTP Server Address, SMTP Port, Return Address, Host ID and Recipient Address 1. The test email is sent to email recipient address 1. The user should press the "Save Settings" button after entering the SMTP information before attempting an email test.

Host ID: Enter something here, to identify the host.

Logging Email Address: IP address for the "Logging" email recipient (may be different from the four "Alarm" Recipient Addresses).

Logging Interval (Hours): This determines how often the input status is emailed. If set to 0 (zero), no email will be sent. **Default: 1**

"Alarm" Recipient Addresses: Email Recipient 1
Email Recipient 2
Email Recipient 3
Email Recipient 4

Relay Sentinel™ IP Address: Enter the IP address of the Relay Sentinel™ being used.

Relay Sentinel™ port: Enter the port of the Relay Sentinel™. Normally 10001

NOTE: Normally left blank unless paired with the Relay Sentinel™ to form a "Relay Extension Cord". The above two entries will need the Relay Sentinel's IP address and port number entered in these locations.

Backup DNS Server IP Add: Enter your DNS address here. **Default: 192.168.1.1**

NTP Server Address: Enter the NTP address here. **Default: pool.ntp.org**

NTP Port: **Default: 123**

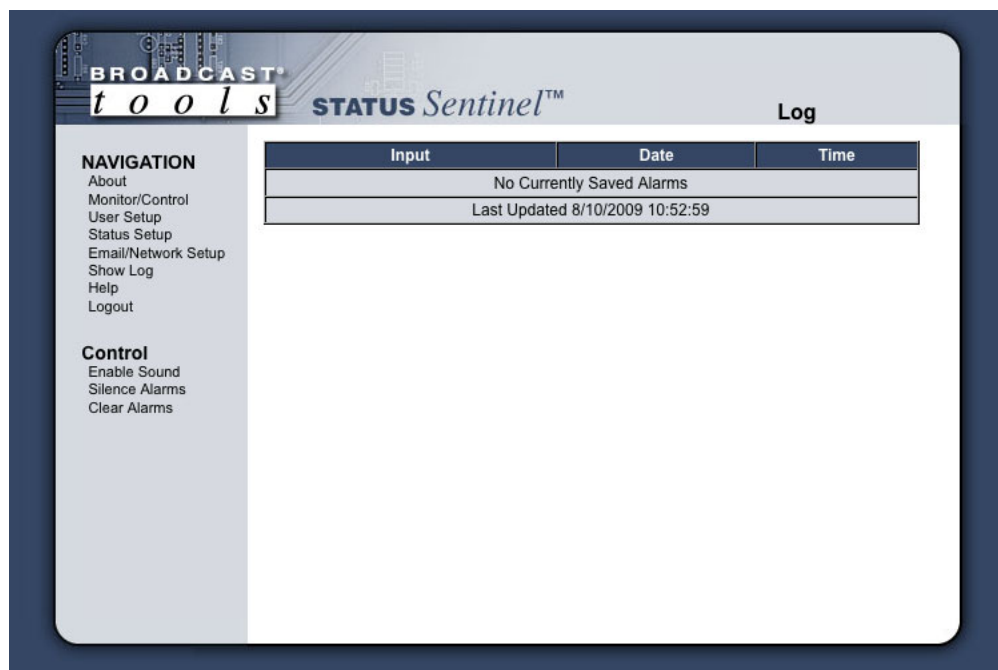
| | | |
|----------------------------|-------------------------------------|------------------|
| NTP Update Interval (Min): | Time between timing updates. | Default: 30 |
| NTP Enabled: | Must be enabled for correct timing. | Default: Enabled |
| Time Zone Offset from UTC: | Must be set for correct timing. | Default: -8 |

NOTE: After you are done making changes to the Email/Network Setup page, you **MUST** press the “Save Settings” button to save your changes. After pressing the “Save Settings” button, the device will reboot (If you changed the IP address, you must navigate your web browser to the new IP address (if the HTTP port was changed from port 80, be sure to add the new port number after the IP: xxx.xxx.xxx.xxx:port #). If you didn’t change the IP address, then the web page will return to the login screen after the device reboots.

Send Test Email: Press this button to send a test email.

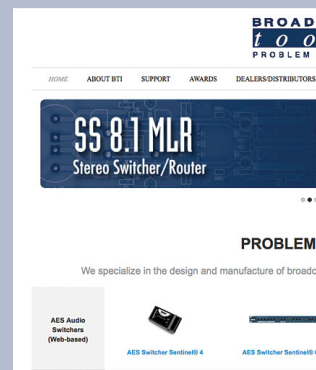
Reload Defaults: When you press the “Reload Defaults” button, the device resets and if the IP address was changed, you must navigate your web browser to the new IP address (if the HTTP port was changed from port 80, be sure to add the new port number after the IP: xxx.xxx.xxx.xxx:port #). If you didn’t change the IP address, then the web page will return to the login screen after the device reboots.

“Show Log” Web Page



WEBSITE:

Visit our web site for product updates and additional information.



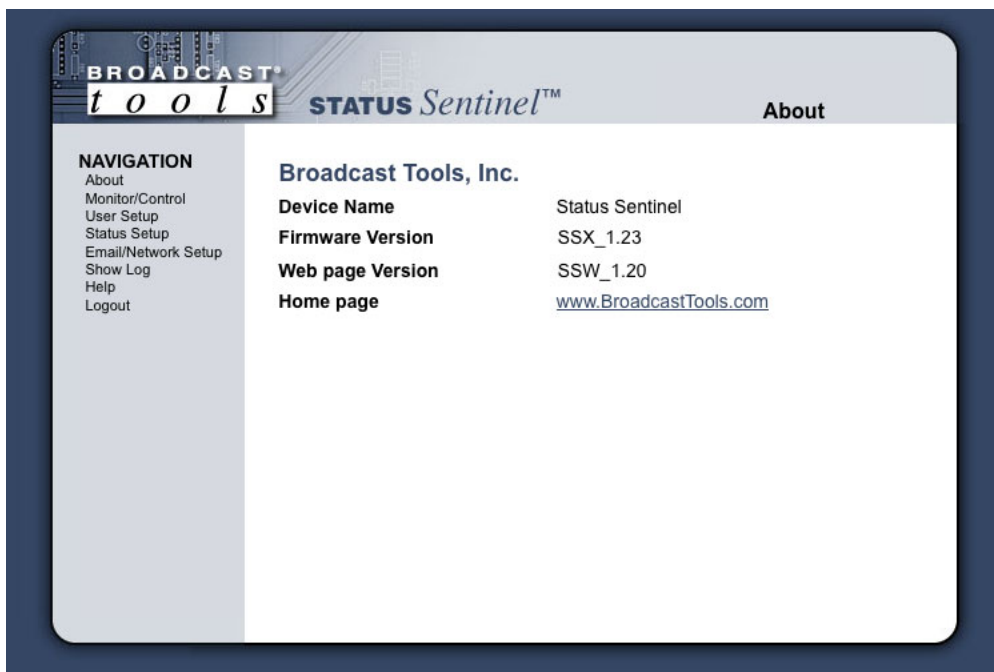
This page displays current alarms.

With the “admin” access level, the user may control all functions.

With the “Monitor/Control” access level, the user may view the “Show Log”, enable/disable PC speaker sound and silence alarms.

NOTE: Shock Wave “Flash” must be installed and operating properly on your PC for the “Alarm Sound” to work when enabled.

“About” Web Page



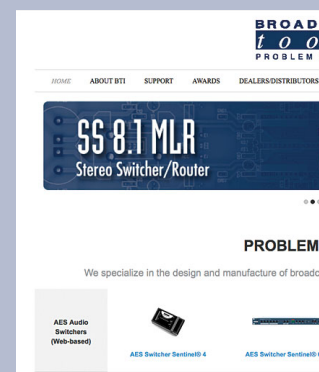
The “About” Web Page displays the product name, firmware version numbers, and Broadcast Tools® Web site link.

Specifications

| | |
|-----------------------------|--|
| Ethernet Interface: | RJ-45, 10base-T or 100base-TX, auto sensing with link & activity led indicators - Full/half duplex. |
| Protocols: | TCP/IP, UDP/IP, ARP, ICMP, SNMP, TFTP, Telnet, DHCP, BOOTP, HTTP, and AutoIP. |
| Status/Digital Inputs: | Three optically Isolated, 5 to 24 VDC. Note: The on-board 5VDC power source is used to power these inputs. |
| On-board 5VDC Power Source: | Five-volts DC, current limited to 100ma. |
| Connectors: | Removable euroblock screw terminals |
| EMI / FCC Compliance: | See the Declaration of Conformity page. Operation is subject to the following two conditions: 1) This device may not cause harmful interference, and 2) this device must accept any interference received, including that which may cause undesired operation. |
| Required power supply: | 7.5 VDC only @ 500ma. 2.1mm ID x 5.5mm OD coaxial connector. Surge protected. Domestic PS supplied. |
| Operating Temperature: | 32 to 122 °F / 0 to 50 °C for all operating voltage ranges. |
| Humidity: | 0 - 90% RH, non-condensing. |
| Size: | 6.18" x 3.70" x 1.42" (L,W,H) |
| Weight: | 1.0 lb. |
| Options: | * CE certified 240 VAC power supply. * RA-1, 1-RU rack shelf. Note: Velcro may be used to secure the product to the RA-1 shelf. |

WEBSITE:

Visit our web site for product updates and additional information.



SPECIFICATIONS

LIMITED WARRANTY

The term “Buyer” as used in this document refers to and includes both (but only) (a) any person or entity who acquires such an item for the purpose of resale to others (i.e., a dealer or distributor of an item), and (b) the first person or entity who acquires such an item for such person’s or entity’s own use.

Broadcast Tools warrants to each Buyer of any item manufactured by Broadcast Tools that the item will be free from defects in materials and workmanship at the time it is shipped by Broadcast Tools if the item is properly installed, used and maintained.

EXCLUSIVE REMEDIES

If Broadcast Tools is notified, in writing, of a failure of any item manufactured by Broadcast Tools to conform to the foregoing Limited Warranty within one (1) year following the date of the Buyer’s acquisition of the item, and if the item is returned to Broadcast Tools in accordance with Broadcast Tools’ instructions for confirmation by inspection of the defect (which at Broadcast Tools’ election may include, without limitation, a requirement that the Buyer first obtain a Return Authorization number from Broadcast Tools, that the Buyer furnish proof of purchase in the form of an invoice and/or receipt, and that the Buyer prepay all freight charges associated with any return of the item to Broadcast Tools using such freight service as Broadcast Tools reasonably may specify), Broadcast Tools will repair or replace the defective item, or will refund the purchase price paid by the Buyer for the item. Broadcast Tools shall have the exclusive right to choose between these alternative remedies.

NO OTHER WARRANTIES OR REMEDIES

TO THE MAXIMUM EXTENT PERMITTED BY APPLICABLE LAW, BROADCAST TOOLS AND ITS SUPPLIERS DISCLAIM ALL OTHER WARRANTIES, EITHER EXPRESS OR IMPLIED, INCLUDING BUT NOT LIMITED TO IMPLIED WARRANTIES OF MERCHANTABILITY OR FITNESS FOR A PARTICULAR PURPOSE; AND THE FOREGOING ALTERNATIVE REMEDIES SHALL BE EXCLUSIVE OF ALL OTHER REMEDIES. THIS LIMITED WARRANTY GIVES YOU SPECIFIC LEGAL RIGHTS. YOU MAY HAVE OTHER RIGHTS, WHICH VARY FROM STATE/JURISDICTION TO STATE/JURISDICTION.

NO LIABILITY FOR CONSEQUENTIAL DAMAGES

TO THE MAXIMUM EXTENT PERMITTED BY APPLICABLE LAW, NEITHER BROADCAST TOOLS NOR ANY OF ITS SUPPLIERS SHALL HAVE ANY LIABILITY FOR ANY SPECIAL, INCIDENTAL, INDIRECT, CONSEQUENTIAL OR PUNITIVE DAMAGES WHATSOEVER (INCLUDING, WITHOUT LIMITATION, ANY DAMAGES FOR LOST PROFITS, BUSINESS INTERRUPTION, LOSS OF DATA OR INFORMATION, COST OF CAPITAL, CLAIMS OF CUSTOMERS, OR ANY OTHER PECUNIARY LOSS) ARISING OUT OF THE USE OF OR THE INABILITY TO USE ANY ITEM SUPPLIED BY BROADCAST TOOLS, EVEN IF BROADCAST TOOLS HAS BEEN ADVISED OF THE POSSIBILITY OF SUCH DAMAGES HAVE ANY LIABILITY FOR ANY SPECIAL, INCIDENTAL, CONSEQUENTIAL, EXEMPLARY OR PUNITIVE DAMAGES. THIS LIMITATION OF LIABILITY APPLIES WHETHER A CLAIM IS ONE ALLEGING BREACH OF A CONTRACT OR WARRANTY, NEGLIGENCE OR OTHER TORT, FOR THE VIOLATION OF ANY STATUTORY DUTY, THE FAILURE OF ANY LIMITED OR EXCLUSIVE REMEDY TO ACHIEVE ITS ESSENTIAL PURPOSE, OR ANY OTHER CLAIM OF ANY NATURE. BECAUSE SOME STATES AND JURISDICTIONS DO NOT ALLOW THE EXCLUSION OR LIMITATION OF LIABILITY FOR INCIDENTAL OR CONSEQUENTIAL DAMAGES, THIS LIMITATION MAY NOT APPLY TO YOU.

Broadcast Tools, Inc.

131 State Street
Sedro-Woolley, WA 98284 • USA

360.854.9559 **voice** • 866.783.1742 **fax**
support@broadcasttools.com **e-mail**
www.broadcasttools.com **website**

Declaration of Conformity

The XPORT Device contained in the Status Sentinel™ conforms to the following standards: (according to ISO/IEC Guide 22 and EN 45014)

Manufacturer's Name & Address:

Status Sentinel™ : Broadcast Tools®, Inc.
131 State Street, Sedro Woolley, WA 98284-1503 USA

XPort: Lantronix 15353 Barranca Parkway, Irvine, CA 92618 USA

Declares that the following product:

Product Name Model: XPORT™ Device Server

Conforms to the following standards or other normative documents:

Electromagnetic Emissions:

EN55022: 1998 (IEC/CSP122: 1993) Radiated RF emissions, 30MHz-1000MHz
Conducted RF Emissions – Telecom Lines – 150KHz – 30MHz
FCC Part 15, Subpart B, Class B
IEC 1000-3-2/A14: 2000
IEC 1000-3-3: 1994

Electromagnetic Immunity:

EN55024: 1998 Information Technology Equipment-Immunity Characteristics
Direct ESD, Contact Discharge
Indirect ESD
Radiated RF Electromagnetic Field Test
Electrical Fast Transient/Burst Immunity
RF Common Mode Conducted Susceptibility
Power Frequency Magnetic Field Test

Manufacturer's Contact:

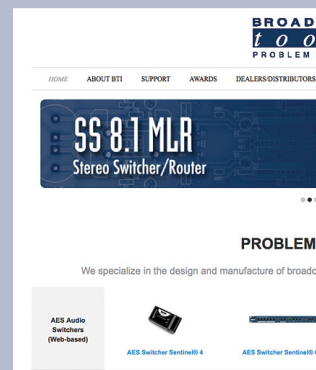
Status Sentinel™
Broadcast Tools®, Inc.
131 State Street
Sedro Woolley, WA 98284-1503 USA
Tel: 360 . 854 . 9559 Fax: 866 . 783 . 1742

XPORT™

Lantronix:
Director of Quality Assurance
15353 Barranca Parkway, Irvine, CA 92618 USA
Tel: 949 . 453 . 3990 Fax: 949 . 453 . 3995

WEBSITE:

*Visit our web site for
product updates and
additional information.*



CONFORMITY